

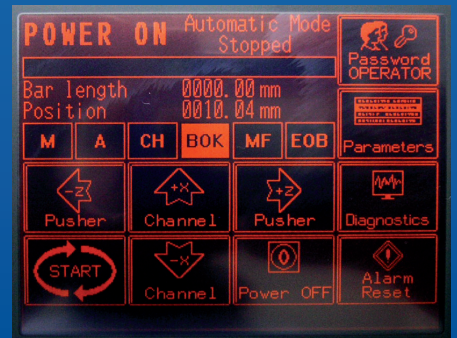
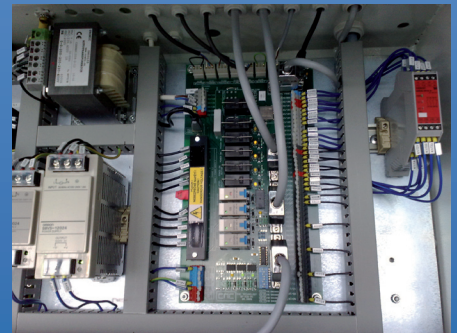


SPACESAVER S2210

Automatic short bar feeder



- ➔ Bar capacity up 6mm to 67mm x 1525mm long
- ➔ Fully automatic set up
- ➔ Feeds the bar to the lathe stopper and to a programmed position (option)
- ➔ Control trough LCD touch screen
- ➔ Quick set up of bar feeder at change of diameter
- ➔ 100% electric drive (no compressed air)
- ➔ CE conformity

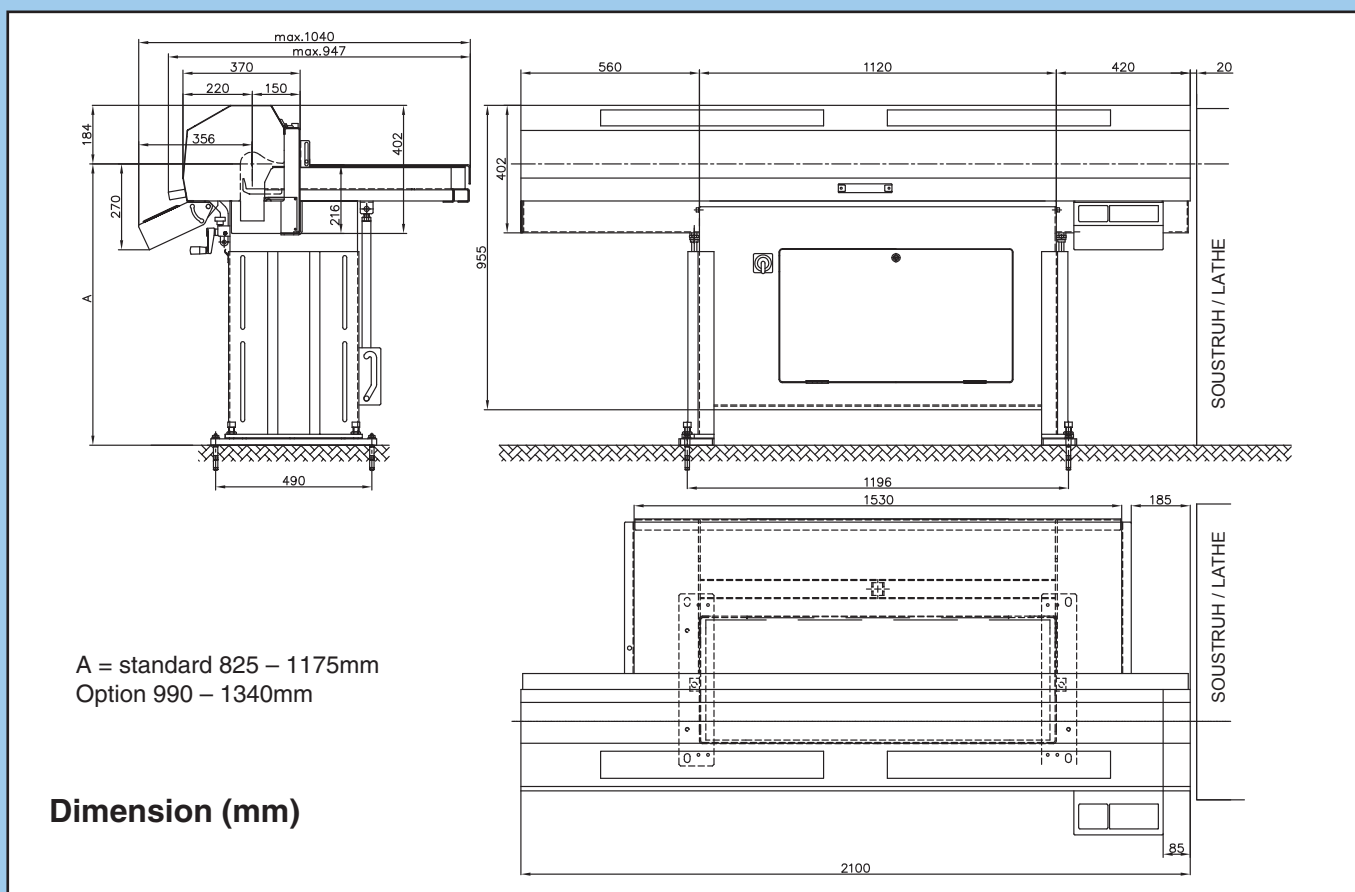


Equipment and accessories for advancement and automation of machining



CNC TECHNOLOGY, spol. s r.o.

Tecnical paramaters	SS2210
Bar feed capacity:	
Round cross section diameter	6 – 67mm
Hexagonal	8 – 58mm
Square	8 – 47mm
Working pusher stroke	1660mm
Maximum length of bar (actual max. length of the bar is defined by the length of the spindle with chuck)	1525 mm
Power supply (50/60Hz)	200/230/400 VAC
Setting time to configure the new bar diameter	max 1min
Starting bar loading cycle	cca 30 s
Feeds the bar to the lathe stopper and to a programmed position (option)	✓
CE conformity	✓



Producer
CNC Technology, spol. s r.o.
Evropská 423/178
CZ-160 00 Praha 6
Tel.: +420 224 362 714, Fax: +420 233 090 450
E-mail: cnctech@cnctech.cz, www.cnctech.cz

Distributor